

MARKER MINI CATENARY STANDARD SPEC SHEET



MM-CAT-ST



Mini Marker lights the way with high CRI, even in the most harsh conditions. Manufactured with 316L stainless steel and a borosilicate glass lens, this catenary luminaire is immune to corrosion caused by salt, oxidization, and traffic. With several beam options and CCT's to choose from, it is easy to find the right coverage for ambience and safety.



SPECIFICATIONS

OPERATING VOLTAGE	24 VDC CV / 850 mA CC
OPERATING TEMPERATURE	-20°C to +50°C
RATED POWER	3 W (CV) / 3 W (CC)
CRI	>90
NO OF LEDS	1
LED TYPE	SMD
LIGHT SOURCE	Samsung
CONTROL	Switched, 1-10V, DALI
OPTICS	Lens
BINNING	3-step
COLOR RANGE	2200K, 2700K, 3000K, 3500K, 4000K, 5000K
MATERIAL	Aluminum
FINISH	Silver (top) and black (body) (Std.)
PROJECTION	8°, 25°, 32°
MOUNTING	Catenary mount
CONNECTION	Outdoor Rated Connections
LAMP LIFE	50,000 hrs
DIMENSIONS	Dia. 1.56 in x 3.86 in (39.5 mm x 98 mm)



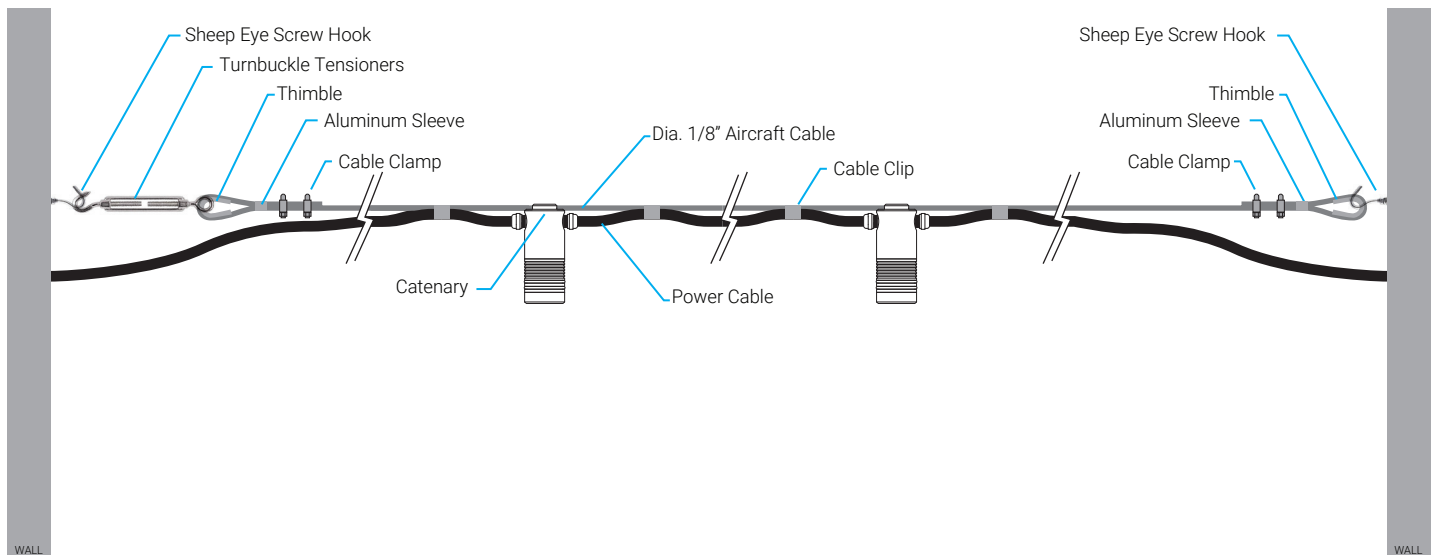
Application



LUMEN DATA AT 2700K

Data	Narrow	Medium	Wide
Beam Angle	8 Degree	25 Degree	32 Degree
Lumens	166 lm	174 lm	156 lm

SUPPORTING COMPONENTS



MARKER MINI CATENARY STANDARD SPEC SHEET



MM-CAT-ST

ORDERING CODE

PRODUCT SERIES	TYPE	TOP	POWER	DRIVER	COLOR TEMPERATURE	CONTROL	PROJECTION	FINISH	ACCESSORIES
MM - Marker Mini	CAT - Catenary	ST - Standard Top	3 W - 3 WATTS (CV) 3 W - 3 WATTS (CC)	CV - Constant Voltage (3W) CC - Constant Current (3W)	CT22 - 2200K CT27 - 2700K CT30 - 3000K CT35 - 3500K CT40 - 4000K CT50 - 5000K	SW - Switched AN - 1-10V DA - DALI	8D - 8 Degrees 25D - 25 Degrees 32D - 32 Degrees	BL - Black SL - Silver XX - Custom	N - None H - Honeycomb M - Half Moon

Sample: MM-CAT-ST-3W-CV-CT22-SW-25D-BL-N

DIMENSIONS



ACCESSORIES

Stainless Steel Corrosion Resistant Rope



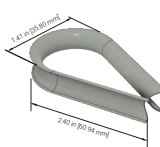
Sheep Eye Screw Hook



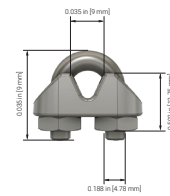
Turnbuckle Tensioners



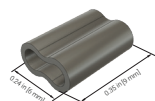
Thimble



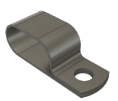
Cable Clamp



Aluminum Sleeve

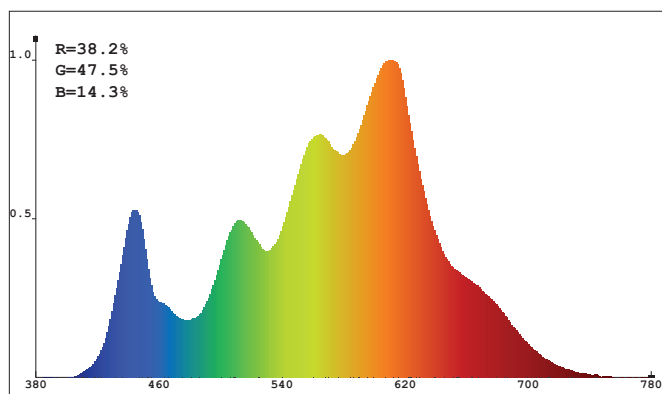


Cable Clip



PHOTOMETRIC DATA

Spectral Distribution



CIE 1931 Color Space

